

**HIKVISION®**



## WIRED SECURITY CONTROL PANEL



# INTEGRATED. SCALABLE. SECURE.

Hikvision wired security control panels provide superior protection in many diverse situations, from retail to industrial scenarios.

The range features two control panels; the standard RS485 version and an M-BUS version with significantly extended range for larger installations. This choice of control panel allows the range to cater for almost any intrusion application, with scalable installation through expanders and repeaters, for complete flexibility, including hybrid capability, with wireless expansion via the RS485 Wireless Receiver.

With integration at their core, these control panels integrate seamlessly with the entire Hikvision range of video and intrusion devices, which includes an extensive portfolio of wired and wireless sensors and detectors. This integration is achieved over iVMS, which provides an ideal platform for multiple system management and setup.



SMS



iVMS



Central Monitoring Station

# KEY FEATURES



## GO FURTHER WITH M-BUS TECHNOLOGY

While the RS485 communication BUS delivers up to 1.2km, M-BUS technology significantly extends the normal range of a BUS by over double, to provide a BUS range of 2.4km. This greatly expands the panel's capability to protect larger environments. Furthermore, the M-BUS panel features two independent BUS, greatly improving redundancy and security in the system, as if one BUS is compromised, the other will remain functional.



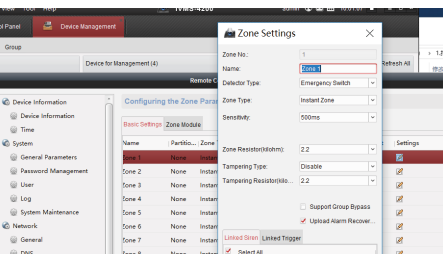
## SCALABLE INSTALLATION

With a number of different types of expanders, the Hikvision range of wired security control panels can be adapted to any installation. Featuring 8 inputs on board and 4 outputs as standard, the panels can be expanded to 48 (RS485) or 256 (M-BUS) inputs, making the range suitable for mid to large scale applications.



## CENTRAL MONITORING STATION SIGNALLING

Hikvision's range has the capability to send alarm transmission messages directly to Central Monitoring Stations (CMS). The control panels can also communicate to two CMS at once, to increase security and redundancy even further.



## iVMS 4200

This function creates the software bridge between Hikvision intruder systems, CCTV, access control and intercom, to deliver a complete solution for every security need. Integrating the wired security control panel range with iVMS elevates the solution much further than traditional stand-alone systems.



## WIDE RANGE OF PERIPHERALS

The Hikvision wired security control panels range utilises a wide range of wired peripherals. From internal PIR and dual technology, outdoor dual-technology and anti-masking detectors, to active infrared and break-glass sensors, the Hikvision range of wired alarm peripherals combined patented technologies with tried and tested techniques to ensure intruder catch performance in any environment.



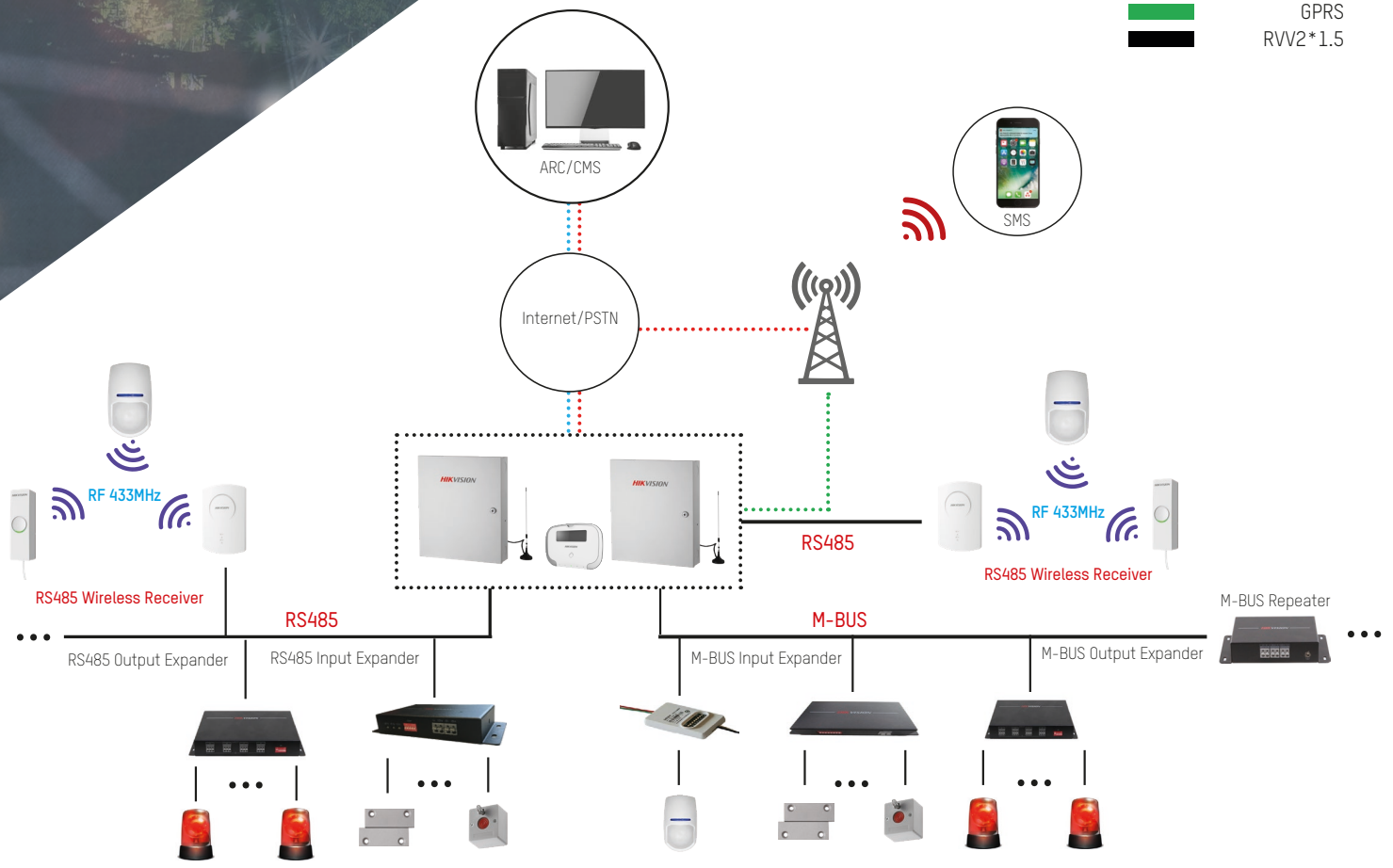
## HYBRID CAPABILITY VIA RS485

Utilising the RS485 Wireless Receiver, both versions of the wired security control panel can deliver hybrid capability. This allows compatibility with Hikvision's wireless peripheral range, to add wireless PIR, dual technology and outdoor detectors, as well as life safety devices to the system. This is ideal for retrofits, covering hard-to-reach areas or where less invasive installation is required.



# SYSTEM TOPOLOGY

- █ PSTN
- █ Wired Network
- █ GPRS
- █ RVV2\*1.5



# VERTICAL MARKETS



## Commercial

Commercial environments can present significant security risks, due to their high value stock. Therefore, a security solution which combines all aspects of security is the only choice for this vertical. Hikvision's integrated security portfolio delivers one system to control staff access, as well as video monitor and secure the premises on one platform. This provides significant advantages to both installers and end-users alike.



## Office

Multi-use office blocks often pose a challenge to intrusion systems. There needs to be consideration to multiple users across different businesses. Hikvision's security systems have the ability to set up areas, with a high number of input availability and users, which presents great advantages in this field.



## Manufacturing & Industry

The challenges posed with industrial sites mean that security systems need to be integrated with other security solutions such as CCTV and Access Control. Hikvision's range delivers this handily, with the 2.4km range of the MBUS enabling perimeter protection over a large area using one BUS, whilst the second BUS can be used to protect onsite offices, for example.

## Retail

The retail sector requires security systems that are robust, scalable and provide a number of partitions and user profiles, particularly for shop owners and workers. Protection of workers is important, so incorporating hold up alarms, alongside video, creates a system which provides peace of mind to both staff and owners. The Hikvision range delivers this in abundance, along with remote programming and diagnostic capabilities, for easy setup and issues management.



## Education

With a number of different areas and large expansion capabilities, the M-BUS control panel is perfectly suited to this vertical. Providing two separate BUS lines provides greater scope and scale of installation, as well as the ability to segment the facility for greater redundancy; should one BUS be removed, the other maintains all peripherals to remain secure and detect any intruder movements. iVMS integration also delivers video capabilities and can link to intercom solutions, alongside management and monitoring onsite, remotely or from a Central Monitoring Station, to offer the perfect security solution from one provider, Hikvision.



# RS485



## Description

The DS-19A08/16-BN(G) control panels feature 8 or 16 inputs on-board and expandable to 48. The panels support communication of alarm transmissions to multiple central stations over various communications methods, including PSTN, GPRS, and LAN. All the functionality of the panel is configurable through client software or keypad programming.

The control panel and system is perfect for vertical industries such as finance, commercial and education, as well as shops, residential settings and apartments.

## Main Features

- 8/16 inputs on-board and expandable to 48
- 4 outputs on-board and expandable to 48
- Transmission method: PSTN+LAN+(GPRS)
- Multiple CMS (Central Monitoring Station) communication paths
- Supports SMS alarm, alarm clear, arm, disarm (-G)
- Supports 32 keypads and 32 keyfobs
- Supports accumulator for power supply
- Scheduled arming/disarming function
- 8 partitions, including 1 public partition
- Tamper protection for panel and devices
- 1 siren output
- Remote upgrade via network
- Hybrid capability via RS485 Wireless Receiver

## Available Models

### DS-19A08-BN

8 inputs control panel, PSTN+LAN

### DS-19A16-BN

16 inputs control panel, PSTN+LAN

### DS-19A08-BNG

8 inputs control panel, PSTN+LAN+GPRS

### DS-19A16-BNG

16 inputs control panel, PSTN+LAN+GPRS

## DS-19A08/16BN

## DS-19A08/16-BNG

Specifications	DS-19A08/16BN	DS-19A08/16-BNG
Alarm Inputs	8 inputs on-board expandable to 48	16 inputs on-board expandable to 48
Alarm Outputs	4 outputs on-board	
Scheduled Output Rule	YES	
Siren Power Supply	12 VDC /750 mA	
PSTN	Support (1-ch)	
Auxiliary Power Output	12 VDC/1 A	
Supported Keypads (LCD)	32	
Tamper-proof Switch	1, Support Tampering Alarm	
Scheduled Arming/Disarming	Support (Normal Schedule/Preferential Schedule)	
Partitions	8 Partitions, 1 Public Partition	
Detector Tamper-proof Alarm	YES	
SMS Alarm-Report Push	N/A	YES
Arming/Disarming via SMS Command	N/A	YES
Key Fobs	32	
Wireless Network Standard	N/A	GPRS
SIM Card Slot	N/A	1
SMA Antenna Interface	N/A	1
Communication		
Network Protocol	SADP and DHCP	
Network Interface	1 RJ45, 10M/100M Self-adaptive	
Keypad Interface	1 RS485 Half-duplex	
Port for Accumulator	1, 12VDC/7Ah	
Printer Interface	1 RS-232	
Electrical Specifications		
Power Supply	220VAC	
Consumption	≤40W (Load Power≤40W)	
Other Details		
Operating Temperature	-10°C - +55°C (14°F to 133°F)	
Operation Humidity	10% - 90%	
Installation Mode	Wall-mounting	
Dimensions (L x W x H)	370mm x 320mm x 86mm	
Weight	<3.5kg	

## KEYPAD



## RS485 INPUT EXPANDERS RF-RECEIVER



## RS485 OUTPUT EXPANDERS





## Description

The DS-19A08-01BN(G) is an M-BUS Security Control Panel with 8 inputs on-board, expandable to 256. It supports communication of alarm transmissions to multiple central stations over various communications methods, including PSTN, GPRS and IP. All the functionality of the panel is configurable through client software or keypad programming.

The advantage of M-BUS is the length of BUS that you can place on the system. Using powered expanders, the data BUS can reach much farther than the traditional RS485 BUS. This expands the range of applications that the M-BUS intruder panel can be used for.

The control panel and system is perfect for vertical industries such as finance, commercial and education, as well as critical infrastructure, petrochemical sites and government institutions.

## Main Features

- 8 inputs on-board expandable to 256
- 4 outputs on-board expandable to 256
- 2 BUSES, up to 2.4km each (RVV2 x 1.5mm) without repeater
- Tree and hand in hand BUS topology are available
- M-BUS non-polarity
- Transmission method: PSTN+LAN+(GPRS)
- Each transmission method can upload alarm information to two different CMS
- Supports SMS alarm, alarm clear, arm, disarm (-G)
- Remotely search event logs
- Remotely upgrade
- Remotely configure for importing/exporting
- Support 1 installer code, 1 master code and 199 user codes
- Contact ID protocol, up to 250 CID reports and multiplex telephone line
- Supports 32 keypads and 32 keyfobs
- Scheduled arming/disarming function
- 8 partitions, including 1 public partition
- Up to 8000 alarm event logs, 2000 operation events logs and 1500 user management events can be stored
- Hybrid capability via RS485 Wireless Receiver

## Available Models

### DS-19A08-01BN

8 inputs control panel, PSTN+LAN

### DS-19A08-01BNG

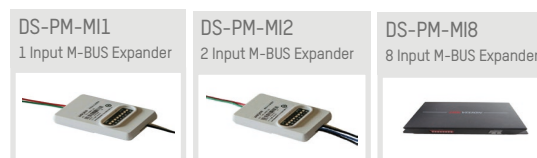
8 inputs control panel, PSTN+LAN+GPRS

	DS-19A08/01BN	DS-19A08/01BNG
<b>Specifications</b>		
Alarm Input	8 inputs on-board expandable to 256	
Alarm Output	4 outputs on-board and expandable to 256 (Capacity:30VDC/1A)	
Scheduled Output Rule	YES	
Siren Power Supply	12 VDC /750 mA	
PSTN	Support (1-ch)	
Auxiliary Power Output	12 VDC/1 A	
Supported Keypads (LCD)	32	
Tamper-proof Switch	1, Support Tampering Alarm	
Scheduled Arming/Disarming	Support (Normal Schedule/Preferential Schedule)	
Partitions	8 Partitions, 1 Public Partition	
Tampering Alarm Detector	Support 8 Local Zones	
SMS Alarm-Report Push	N/A	YES
Arming/Disarming via SMS Command	N/A	YES
Wireless Network Standard	N/A	GPRS
SIM Card Slot	N/A	1
SMA Antenna Interface	N/A	1
<b>Communication</b>		
Network Protocol	SADP and DHCP	
M-BUS	2 BUSES, up to 2.4km each (RVV2 x 1.5mm) without repeater	
Network Interface	1 RJ-45; 10M/100M Self-adaptive	
Keypad Interface	1 RS-485 Half-duplex	
Port for Accumulator	1, 12VDC/7Ah	
Printer Interface	1 RS-232 Information Output Interface	
<b>Electrical Specifications</b>		
Power Supply	220VAC	
Consumption	≤60W (Load Power ≤ 40W)	
<b>Other Details</b>		
Working Temperature	-10°C ~ + 55°C (14°F to 133°F )	
Working Humidity	10% ~ 90%	
Installation Mode	Wall-mounting	
Dimensions (L x W x H)	370mm × 320mm × 86mm	
Weight	<3.5kg	

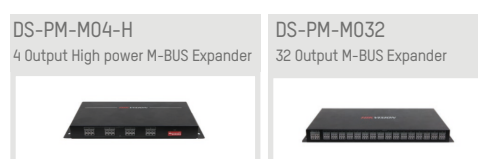
## KEYPAD



## M-BUS INPUT EXPANDERS



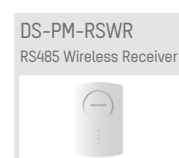
## M-BUS OUTPUT EXPANDERS



## M-BUS REPEATER



## RF-RECEIVER





Distributed by



## HIKVISION®

### Headquarters

No.555 Qianmo Road, Binjiang District,  
Hangzhou 310051, China  
T +86-571-8807-5998  
overseasbusiness@hikvision.com

**Hikvision USA**  
T +1-909-895-0400  
sales.usa@hikvision.com

**Hikvision Australia**  
T +61-2-8599-4233  
salesau@hikvision.com

**Hikvision India**  
T +91-22-28469900  
sales@pramahikvision.com

**Hikvision Canada**  
T +1-866-200-6690  
sales.canada@hikvision.com

**Hikvision Thailand**  
T +662-275-9949  
sales.thailand@hikvision.com

**Hikvision Europe**  
T +31-23-5542770  
sales.eu@hikvision.com

**Hikvision Italy**  
T +39-0438-6902  
info.it@hikvision.com

**Hikvision Brazil**  
T +55 11 3318-0050  
Latam.support@hikvision.com

**Hikvision Turkey**  
T +90 (216)521 7070- 7074  
sales.tr@hikvision.com

**Hikvision Malaysia**  
T +6-032-7224000  
sales.my@hikvision.com

**Hikvision UK & Ireland**  
T +01628-902140  
sales.uk@hikvision.com

**Hikvision South Africa**  
Tel: +27 (10) 0351172  
sale.africa@hikvision.com

**Hikvision France**  
T +33(0)1-85-330-450  
info.fr@hikvision.com

**Hikvision Kazakhstan**  
T +7-727-9730667  
nikia.panfilov@hikvision.ru

**Hikvision Vietnam**  
T +84-974270888  
sales.vt@hikvision.com

**Hikvision UAE**  
T +971-4-4432090  
salesme@hikvision.com

**Hikvision Singapore**  
T +65-6684-4718  
sg@hikvision.com

**Hikvision Spain**  
T +34-91-737-16-55  
info.es@hikvision.com

**Hikvision Tashkent**  
T +99-87-1238-9438  
uzb@hikvision.ru

**Hikvision Hong Kong**  
T +852-2151-1761  
info.hk@hikvision.com

**Hikvision Russia**  
T +7-495-669-67-99  
saleru@hikvision.com

**Hikvision Korea**  
T +82-(0)31-731-8817  
sales.korea@hikvision.com

**Hikvision Poland**  
T +48-22-460-01-50  
info.pl@hikvision.com

**Hikvision Indonesia**  
T +62-21-2933759  
Sales.Indonesia@hikvision.com

**Hikvision Colombia**  
sales.colombia@hikvision.com

www.hikvision.com

Follow us on social media to get the latest product and solution information:



Hikvision



HikvisionHQ



HikvisionHQ



Hikvision\_Global



hikvisionhq



Hikvision  
Corporate Channel